

症例3

熊本中央病院 逢坂珠美

症例 : 60代男性
腰背部痛・食欲不振にて当院受診

<血液検査>

<目視分類>

<凝固検査>

WBC 6.2 × 10³/μl

Eosin 1.0 %

PT 65.4 %

RBC 3.78 × 10⁶/μl

Myelo 2.0 %

APTT 37.0 sec

Hb 12.1 g/dl

Meta 2.0 %

FIB 178 mg/dl

MCV 93.1 fl

Stab 8.0 %

FDP 15.2 μg/ml

MCH 32.0 pg

Seg 50.0 %

DD 8.1 μg/ml

MCHC 34.3 %

Lym 28.0 %

PLT 89 × 10³/μl

Mono 9.0 %

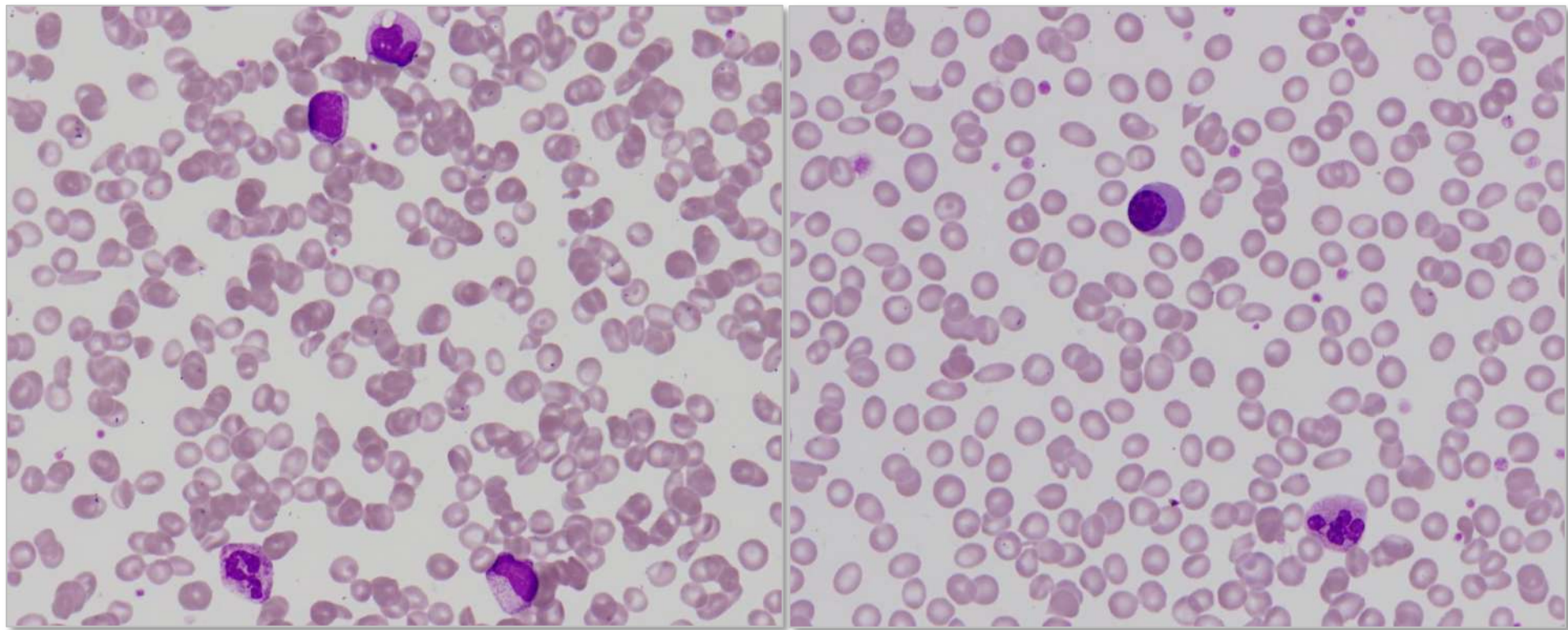
Ret 0.5 %

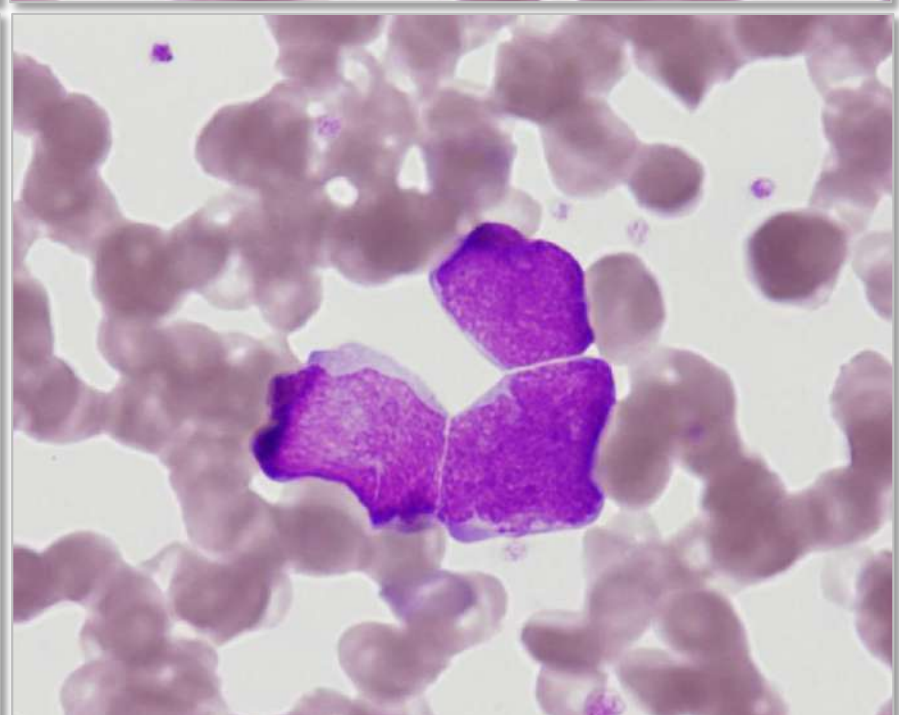
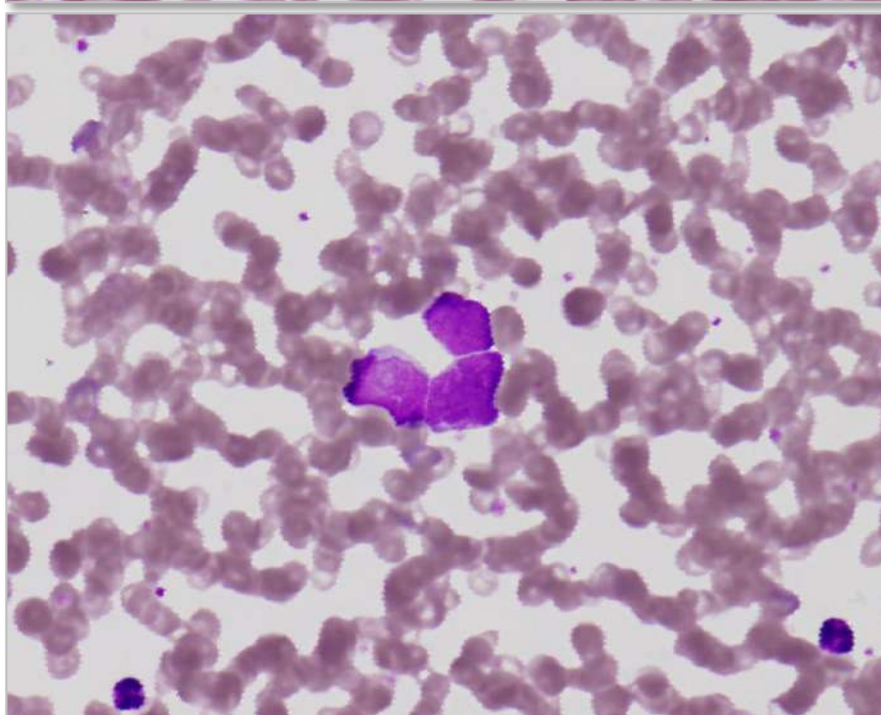
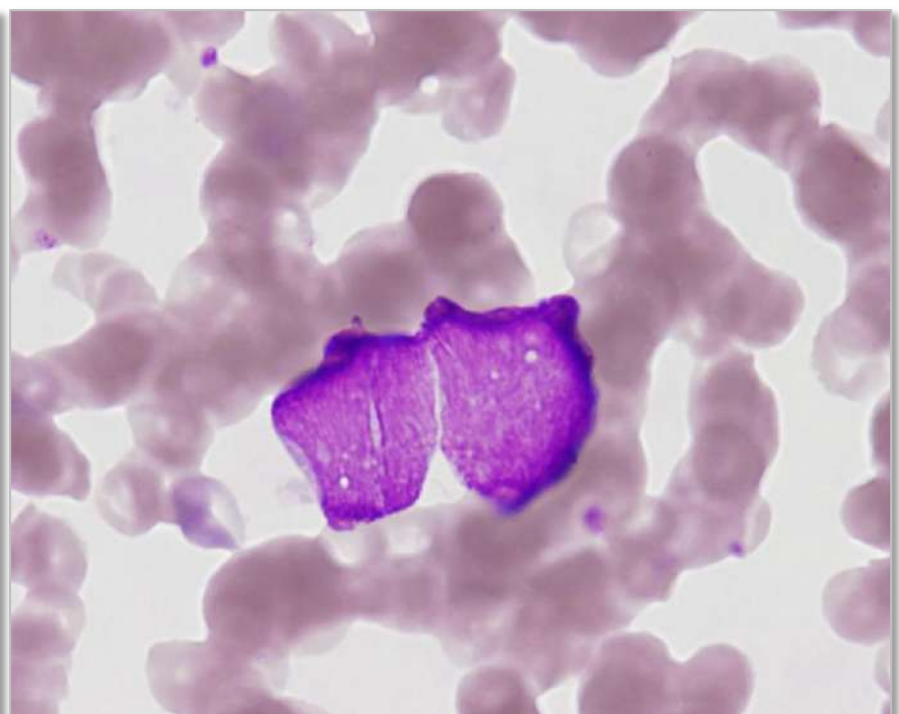
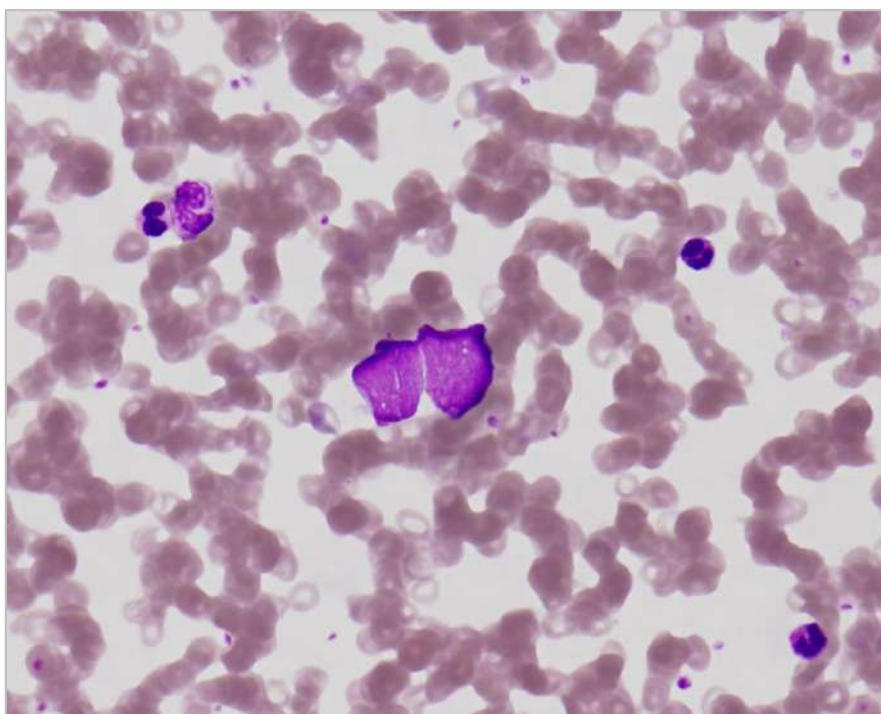
ErbI 3/100WBC

<生化学検査>

TP	7.0 g/dl	Na	137 mEq/L
ALB	3.2 g/dl	K	4.31 mEq/L
T-Bil	0.6 mg/dl	Cl	99 mEq/L
AST	22 IU/L	Ca	9.08 mEq/L
ALT	17 IU/L	CRP	1.04 mg/dl
LD	328 IU/L		
ALP	402 IU/L		
BUN	23.7 mg/dl		
CRE	1.1 mg/dl		

末梢血





骨髓

